

Occupational Air Quality

STATS Consulting and Monitoring

- Occupational Air Quality Exposure monitoring
- Mitigation and control measures design
- Internal air quality & comfort assessment of workspaces

Occupational exposure to hazardous substances is governed by the Control of Substances Hazardous to Health (COSHH) Regulations, which require that the risk of exposure to hazardous substances be assessed and avoided or controlled. Where a risk of exposure is identified, monitoring may be used to assess the adequacy of control measures.

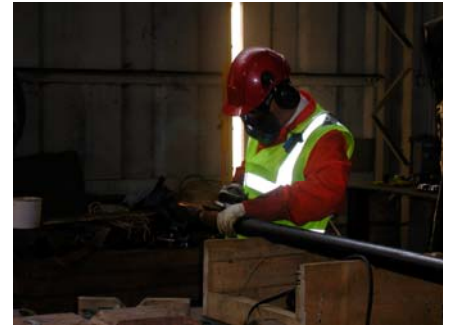
Air quality and comfort parameters in office buildings and workspaces can have a dramatic effect on productivity, health and happiness of workers. The airtightness of modern buildings and recycling of air by ventilation systems can lead to the accumulation of indoor air pollutants from a variety of sources, including office equipment and furnishings.

STATS has the expertise and capability to assess occupational air quality:

- Personal and static monitoring for chemical and biological agents
- Internal Air Quality assessment of buildings and office space.

Pre-programmed and reactive monitoring can be undertaken and STATS' experience covers a wide range of situations, and parameters including:

- Inhalable and respirable dust
- Indoor air quality & comfort parameters
- Particulates and gasses from processes such as welding
- Respirable crystalline silica
- Diesel engine exhaust emissions (DEEE)
- Volatile & semi volatile compounds
- Asbestos and fibres
- Bioaerosols



Occupational exposure monitoring



DEEE exposure monitoring



Office air quality

Contact: William Franklin

STATS Limited

Porterswood House, Porters Wood
St Albans, Hertfordshire AL3 6PQ

Tel: 01727 833 261

Fax: 01727 798 630

Email: environment@stats.co.uk

