

Air Quality

STATS Consulting and Monitoring

- Environmental impact assessment (EIA) and planning studies
- Mitigation and control measures design
- Baseline and ambient air quality
- Nuisance from demolition, construction, commercial and industrial activities
- Occupational exposure and Internal Air Quality

Air quality can have significant health and environmental effects and is one of the main “quality of life” factors in people’s lives. Air quality is increasingly being seen by environmental health and planning authorities as a key material consideration in determining planning applications for residential and other forms of development, as set out in PPS23.

Local authorities must review and assess local air quality against health based objectives set out in the government’s National Air Quality Strategy (updated 2007) and the outcome informs planning and policy.

Occupational exposure is governed by the COSHH Regulations, which require that exposure to hazardous substances be avoided or controlled. Where a risk of exposure is identified, monitoring may be used to assess the adequacy of control measures.

Activities such as demolition and construction works may give rise to fugitive dust, fumes and odours that may have an adverse impact on air quality.

STATS has the expertise and capability to assess air quality in support of planning applications and building design for:

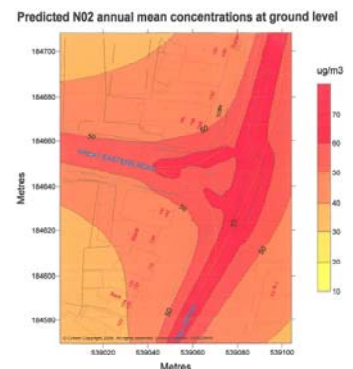
- Sensitive development close to potential sources of air pollution, including major roads
- Developments potentially resulting in new emissions to the atmosphere
- Internal Air Quality assessment of office space.

Pre-programmed project monitoring and reactive nuisance monitoring can be undertaken and STATS’ experience covers a wide range of situations, including:

- Dust and other airborne pollution from demolition and construction works
- Emissions for industrial processes, including local exhaust ventilation (LEV)
- Pollutant dispersion modelling of roads and point, area or volume sources.



Occupational exposure monitoring



Predictive air quality modelling



On-site construction dust monitoring

Contact: William Franklin

STATS Limited
 Porterswood House, Porters Wood
 St Albans, Hertfordshire AL3 6PQ
 Tel: 01727 833 261
 Fax: 01727 798 630
 Email: environment@stats.co.uk

