

# Air Quality

## STATS Consulting

- Environmental impact assessment (EIA) and planning studies
- Mitigation and control measures design

## STATS Environmental Monitoring

- Baseline, ambient and workplace environments
- Nuisance from demolition, construction, commercial and industrial activities

Air quality is one of the main “quality of life” factors in people’s lives and is increasingly being seen by environmental health and planning authorities as a key material consideration in determining planning applications for residential and other forms of development.

Guidelines on what constitutes acceptable ambient air quality are based on the achievement of health based air quality objectives as set out in the government’s National Air Quality Strategy. Activities such as demolition and construction works may give rise to fugitive dust, fumes and odours that may have an adverse impact on air quality.

STATS has the expertise and capability to evaluate air quality in support of planning applications and building design for:

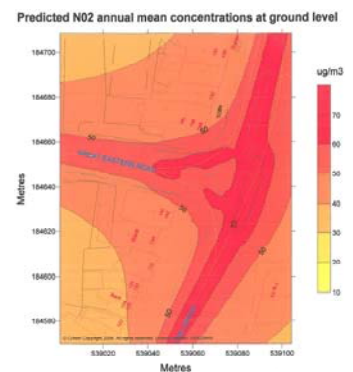
- Development close to potential sources of air pollution, including major roads
- Residential, retail, office, commercial and industrial developments that potentially will result in new emissions to the atmosphere
- Internal Air Quality assessment of office space.

Pre-programmed project monitoring and reactive nuisance monitoring can be undertaken and STATS’ experience covers a wide range of situations, including:

- Dust and other airborne pollution from demolition and construction works
- Emissions for industrial processes, including local exhaust ventilation (LEV)
- Pollutant Dispersion modelling of roads and point, area or volume sources



Baseline assessment for an EIA



Predictive air quality modelling



On-site construction dust monitoring

Contacts: William Franklin

STATS Limited  
 Porterswood House, Porters Wood  
 St Albans, Hertfordshire AL3 6PQ  
 Tel: 01727 833 261  
 Fax: 01727 798 672  
 Email: environment@stats.co.uk

