

STATS Technical Services

- Comprehensive geophysical site investigation and non-destructive testing capabilities

STATS Consulting

- Design and supervision of geophysical investigations
- Review and interpretation of existing geophysical data
- Numerical modelling for improved data inversion
- Expert witness

Use of Geophysics & Non-Destructive Testing

The deployment of the latest equipment, coupled with the field application of the latest processing and visualisation software can provide key information not available through other means.

Geophysical surveying techniques provide a toolbox of rapid, discrete and cost effective methods for the location and identification of subsurface features and building structure.

STATS Geophysical provides expertise, survey design and site investigation services. We routinely apply state of the art geophysical instrumentation to the identification of subsurface variations associated with man-made and natural phenomena. Our senior staff have international research profiles through their work in geophysical data collection and interpretation, with work ongoing into new equipment and data processing software.

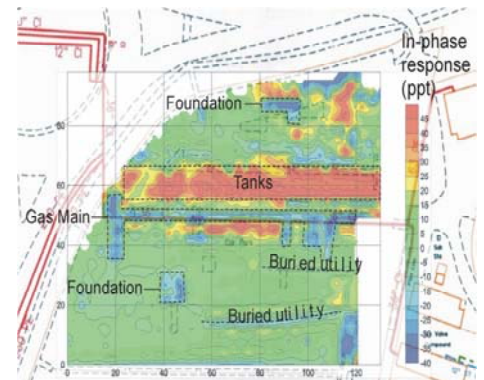
Applications

Our dedicated team of geophysical engineers have experience and expert knowledge of applying geophysics in the following areas:

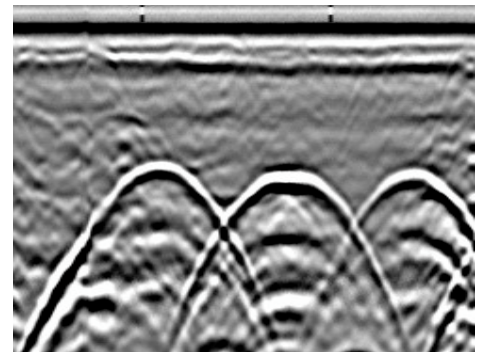
- Brownfield sites – characterisation of subsurface features
- Contaminated land – contaminant detection and mapping
- Structural investigations – reinforcement characterisation and imaging; concrete thickness and integrity assessment
- Historic buildings – facing thickness measurement; detection and mapping of internal metalwork; void detection
- Landfill sites – boundary delineation and fill characterisation
- Archaeological surveys – detection of archaeological remains
- Geological investigations – stratigraphic imaging and mapping; depth to bedrock assessment; void detection
- Hydrological investigations - aquifer mapping
- Borehole geophysics – high resolution at depth for ground properties, buried features, and foundation depths
- Service and utility detection and tracing



Radar survey of Westminster Bridge



Interpreted ground conductivity data



Radar image of three USTs

Contact: Dr George Tuckwell

Porterswood House, Porters Wood
St Albans, Hertfordshire AL3 6PQ

Tel: 01727 798 643

Fax: 01727 798 630

Email: geophysics@stats.co.uk



INVESTOR IN PEOPLE



0278



251

